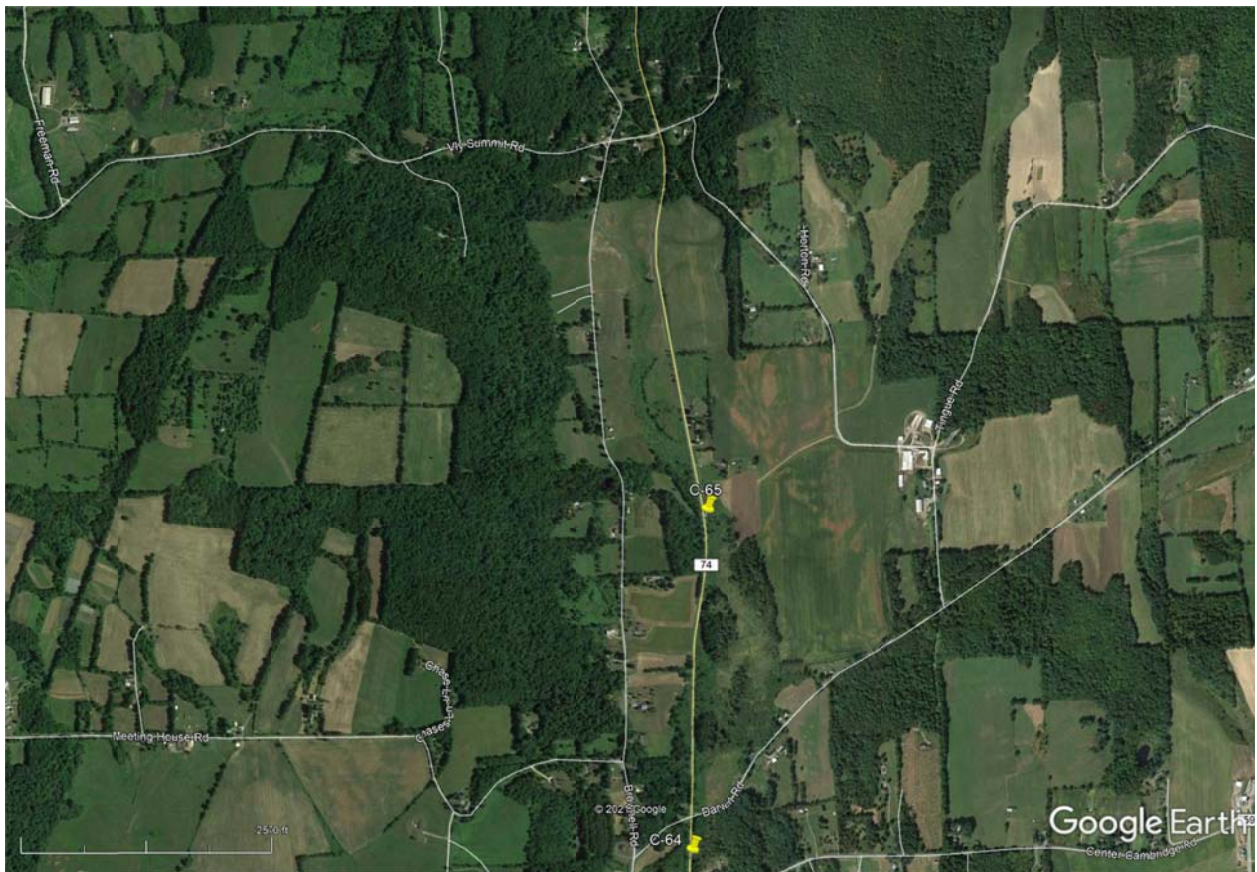


Bridge Closure

Washington County Bridge C-65 – County Route 74 over Wampecack Creek will be closed Starting

Monday May 17, 2021 at 0700 hours

for approximately 12 weeks for bridge replacement.



Official Detour will utilize County Route 59A, County Route 59, County Route 60, NYS Route 372, and County Route 74A

County Route 74 will be closed to all traffic except local residents between Darwin Road and Vly Summit Road.